

# TransNet



Your Partners in Power



April 2020



# LV JUICE

## Stainless Steel A2 Cable Glands

NEW PRODUCT



### FEATURES

- Seals the cable sheath to IP68
- Specially formulated elastomeric seals
- Wide sealing range
- Precision manufactured from high quality Stainless Steel 316
- For indoor and outdoor use
- Complete with heavy duty locknut & thread sealing gasket

### TECHNICAL DATA

GLAND MATERIAL	Stainless Steel 316
SEAL MATERIAL	Thermoplastic Elastomer (Silicone on request)
CABLE TYPE	Unarmoured
SEALING AREA	Outer Sheath
OPTIONAL ACCESSORIES	Locknut, Shroud, Earth Tag, Adaptor/Reducer, Serrated Washer
INGRESS PROTECTION	IP66/68
OPERATING TEMPERATURE	-30°C to 130°C
STANDARDS	ANZS 3000, BS 6121-5, BS 7671, BS 7430, IEC 60364-5-54, SANS 0142



View the latest CCG catalogue on our website [www.transnet.co.nz/Catalogues](http://www.transnet.co.nz/Catalogues)



## This Month

- NEW RYANFIRE TD FIRE COLLARS PAGE 2
- IC-4 RATED LEDPNLA PANEL LIGHTS PAGE 4
- EUROTESTEASI - WHAT'S THE DIFFERENCE? PAGE 8

# FREE RETRACTABLE USB CHARGE CABLE

WHILE STOCKS LAST

When you spend over \$500 (+GST) on one invoice this month



www.transnet.co.nz



### TD FIRE COLLARS

Ryanfire TD Fire Collars are a stainless steel casing with fixing legs, pre lined with a Ruberoid graphite loaded strap most commonly fixed around combustible Insulation, cable bundles or combustible pipes. They are designed to be fixed from above within a variety of floor substrates.

#### TECHNICAL INFO

- Standard sizes from 40mm to 160mm diameter
- Stainless Steel
- Retro-Fit capable
- Tested to AS1530:2014 / AS4072.1-2005 at IANZ accredited laboratories
- FPA NZ Passive Product Registered.
- Suitable for various floor substrates

Cat No.	Core Hole Diameter (mm)
FTTD40	75
FTTD50	80
FTTD65	100
FTTD80	115
FTTD100	150
FTTD125	165
FTTD150	230

#### APPLICATIONS

Suitable for use around various types of insulation, combustible pipes, cables and Pair coil services. Ryanfire TD collars are tested on various floor substrates including trapezoidal tray-deck composite floors, timber infill, masonry and precast concrete.

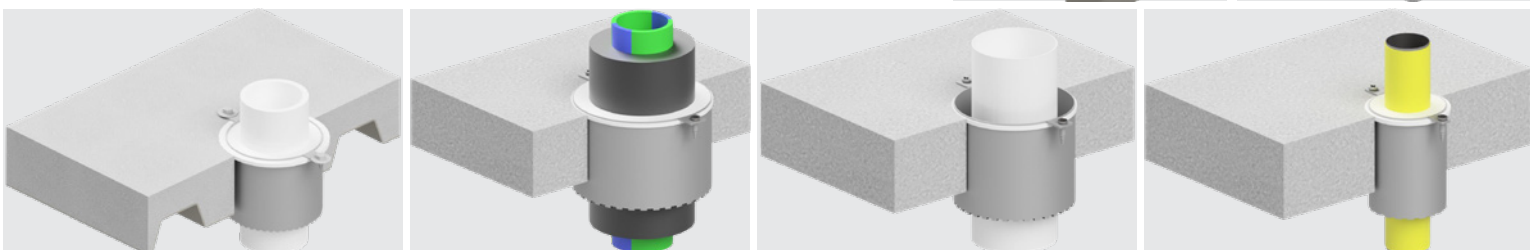
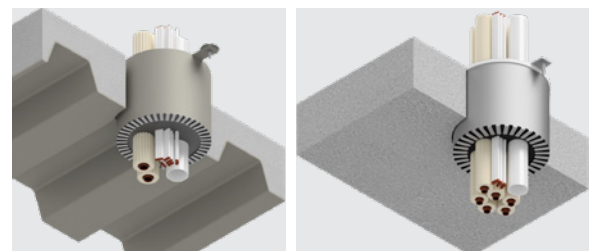
#### INSTALLATION BASIC REQUIREMENTS

Position TD Collar from the top side of the floor substrate, secure mild steel fixings through each leg of the collar to a minimum embedment of 30mm into the floor substrate. Check floor type and thickness prior to installation to ensure compliance and FRR performance.

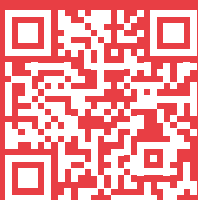
In all cases, refer to the Ryanfire system [datasheet](#) for installation instructions & compliance information.

Passive fire protection is a life-safety component to any building, therefore it is important that the products are installed correctly "as per" the manufacturers instructions to be compliant.

For technical drawings see [ryanfire.co.nz](http://ryanfire.co.nz)



VIEW THE RANGE





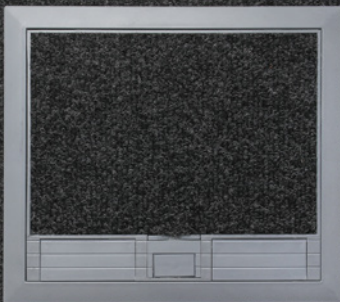
## FBPL4P8D-NZ

### Recessed Plastic Lid Outlet Box Power & Data Provision

This Cableaway floor outlet box is an ideal way to supply power, data and A/V to open floors of a commercial office building or residential home. With a massive four auto switched power outlets and provision for up to eight data ports it offers flexibility and convenience now and in the future. The Cableaway range of floor boxes features multiple size and finishing options to suit any situation.

#### Features

- POWDER COATED ZINC ANNEALED STEEL BODY
- 9MM RECESSED PLASTIC LID
- 20MM AND 25MM KNOCKOUTS PROVIDED FOR EASY CONDUIT ENTRY
- DUAL CABLE EXIT FLAPS
- FOUR AUTO SWITCHED POWER OUTLETS SUPPLIED
- PROVISION FOR EIGHT CAT5 OR CAT6 DATA PORTS

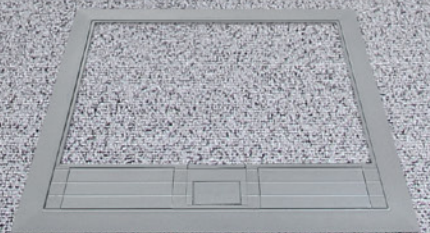


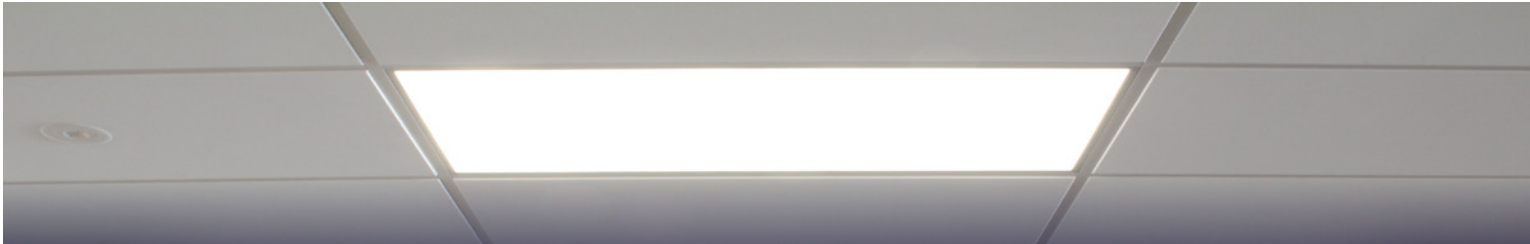
Carcass dimensions WxLxH 194x227x90mm(111mm H including lid), 220x250mm lid



FBPL4P8D-NZ

**\$325**  
+GST





# LEDPNLA



GLASS  
FREE



IC-4 RATED  
LUMINAIRE



COST  
EFFECTIVE  
OPERATION

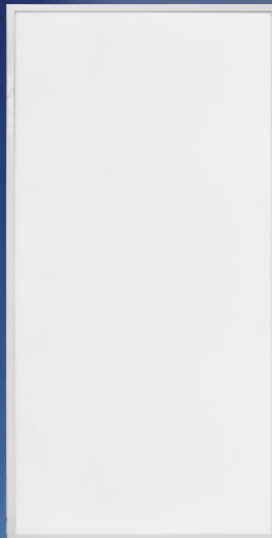
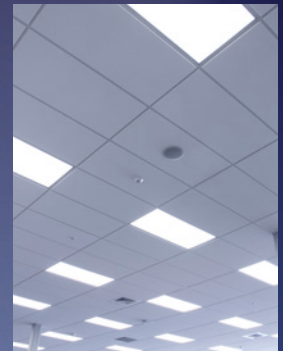


HIGH  
PERFORMANCE



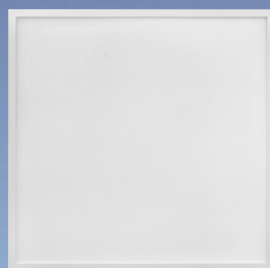
The LEDPNLA LED troffer is an economical solution for retrofit applications. At only 11mm in depth the LEDPNLA can fit into the tightest of ceiling cavities with ease. Multiple mounting and dimming options are available. A high output (HO) Pure White (5000K) 60W version is available for higher ceilings and retail areas.

Additionally these units are tested and compliant for IC-4 meaning panels can be covered with insulation (driver must be sitting on top of insulation) making them perfect for schools, offices and for surface mounting.



## APPLICATIONS

- Offices
- Educational facilities
- Amenity lighting
- General workspaces
- Retail areas



## TECHNICAL SPECIFICATIONS

LED SOURCES	36W, 38W, 60W (HO)
POWER FACTOR	> 0.9
COLOUR RENDERING INDEX	RA > 80
COLOUR TEMPERATURE	(NW) NATURAL WHITE: 4000K (PW) PURE WHITE 5000K (HO VERSION)
LED CHIP	EPISTAR
OPERATING RANGE	0°C TO +40°C
IP RATING	IP20 STANDARD (IP54 AVAILABLE ON REQUEST)
UGR	<22
LIFESPAN (TM-21)	> 50,000 HOURS L70 B10
SDCM	<6
MATERIALS	POWDER COATED ALUMINIUM FRAME, PS DIFFUSER
DRIVER	XZ AS STANDARD, OTHER OPTIONS AVAILABLE ON SPECIAL REQUEST
MOUNTING OPTIONS	RECESS, SURFACE, SUSPENDED
DIMENSIONS	595MM X 595MM X 11MM (36W) 1195MM X 295MM X 11MM (36W) 1195MM X 595MM X 11MM (38W/60W)

Cat No.	Lumens	Dimmable	Power	Weight
LEDPNLA-6X6-36-NW*	3400	NO	36W	4.0KG
LEDPNLA-6X6-36-NW-D*	3400	YES		
LEDPNLA-3X12-36-NW	3400	NO	38W	7.8KG
LEDPNLA-3X12-36-NW-D	3400	YES		
LEDPNLA-6X12-38-NW	3600	NO	60W (HO)	7.8KG
LEDPNLA-6X12-38-NW-D	3600	YES		
LEDPNLA-6X12-60-PW	7200	NO	7200	7.8KG
LEDPNLA-6X12-60-PW-D	7200	YES		

\*Higher lm/W (4100lm) model available on special request

[WWW.ECOLIGHT.CO.NZ](http://WWW.ECOLIGHT.CO.NZ)





## ARE YOU READY FOR EV?

### EV READY KIT FOR WALLBOX PULSAR & PULSAR PLUS

Install an EV ready kit or two in any new build house or renovation to ensure that a changeover to a Wallbox Pulsar EV charging station is a simple, easy and neat. These kits futureproof any new build while giving you the convenience of immediate access to a domestic 10 amp double socket. When you require an EV charging station an electrician can simply swap out the adaptor plate and socket outlet for a Wallbox Pulsar or Pulsar Plus unit\*.

The charge station supply cable is heavier than a normal electrical lead so it is important the Wallbox has a solid mounting. Installing an EV ready kit when a house is built ensures that the charging station will never pull out from the plaster board.

#### FUTUREPROOF YOUR HOME NOW

- Avoid extra retrofit costs by installing an EV Ready Kit during the initial build
- Make use of two standard power outlets until you require an EV charging station
- It takes only 15 minutes for an electrician to swap the outlets for a Wallbox Pulsar or Pulsar Plus charging station\*
- Great for corporates - the Wallbox can be moved if the employee moves

#### WHY CHOOSE A WALLBOX CHARGING STATION?

- Fully compliant and tested to NZ requirements
- Monitors & adjusts charging current to ensure no overloading
- Ultimate safety features - DC leakage protection built in
- Cost effective installation only requires a Type A RCD - no need for Type B
- Take your Wallbox with you if you move
- Great for corporates - easily allocate & reimburse for home charging
- Available in black & white

#### KIT CONTENTS

- Mounting bracket for EV charging station
- Adaptor plate and domestic 10-amp socket outlet
- 6mm XLPE supply cable to connect EV ready kit to electrical distribution board (Note: XLPE has higher heat rating than standard house wiring, and some EV brands require this cable be used)
- 230V rated communications cable to ensure home & power sharing

\*Wallbox Pulsar/Pulsar Plus charging station not included in EV ready kit  
Note: custom kits available if required.

Cat No.	Description
EVC-EVREADY-5M-WH	EV Ready Kit, 5m × 6mm <sup>2</sup> XLPE cable, White
EVC-EVREADY-5M-BK	EV Ready Kit, 5m × 6mm <sup>2</sup> XLPE cable, Black
EVC-EVREADY-10M-WH	EV Ready Kit, 10m × 6mm <sup>2</sup> XLPE cable, White
EVC-EVREADY-10M-BK	EV Ready Kit, 10m × 6mm <sup>2</sup> XLPE cable, Black

evc.co.nz | +64 9 274 3340 | ev@transnet.co.nz

Wallbox Pulsar or Pulsar Plus installed with an EV Ready Kit in the home



FROM  
**\$105.80**  
+GST



The EV Ready Kit doubles as a fully functioning powerpoint until you're ready for an EV





RESILIENT  
DURABLE  
STRONG  
MILITARY SPEC  
RNF-100



This premium grade flame-retardant polyolefin heatshrinkable tubing has outstanding all round performance, flexibility, and good chemical and solvent resistance. Used extensively in military applications for lightweight harness jackets, insulation, colour coding, identification, protection against fluids, and added mechanical strength.

#### TECHNICAL DATA

- Excellent UV resistance
- Flame retardant (Black/colours only)
- Operating temp. -55°C to 135°C
- Minimum shrink temp. 95°C
- Minimum full recovery temp. 121°C
- Shrink ratio 2:1
- Available in 1200mm lengths or spools

#### APPROVALS


\*UL File E35586  
\*CSA LR31929  
VG 95343 Part 5 Type A and B  
VDE 0341-Pt9005

Def Stan 59-97 Type 2b  
MIL-DTL-23053/5 Class 1 (colours), (Clear) (exclude 1-¾)  
BS 4G-198PART 3 11B

#### APPLICATIONS

- Electrical insulation
- Wire strain relief
- Colour coding & identification
- Light weight and harness jacket

#### COLOUR CODES

	CL = CLEAR		YO = YELLOW
	BK = BLACK		GN = GREEN
	RD = RED		BU = BLUE
	WH = WHITE		



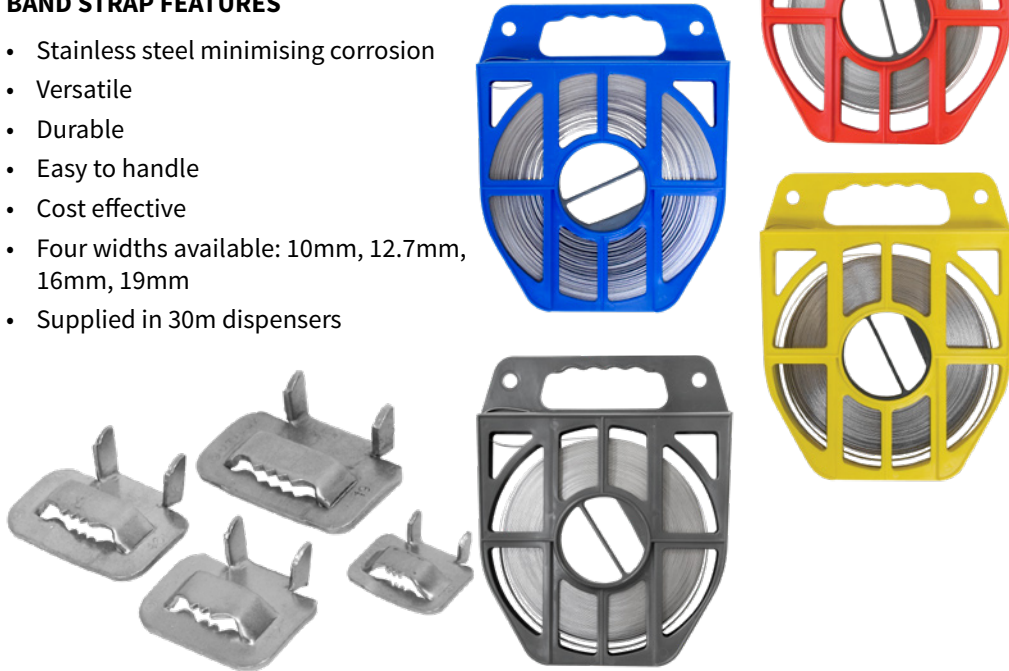
## UTILUX BAND STRAP & BUCKLES

Utilux band straps and buckles are versatile, durable and easy to use. Made of stainless steel to minimise corrosion, there are four sizes available to cover a range of applications.

Strap is supplied in 30m dispensers and buckles in packs of 100.

### BAND STRAP FEATURES

- Stainless steel minimising corrosion
- Versatile
- Durable
- Easy to handle
- Cost effective
- Four widths available: 10mm, 12.7mm, 16mm, 19mm
- Supplied in 30m dispensers



Cat No.	Reel Length (m)	Band Strap Width (mm)	Reel Colour	Buckles	Pack Qty
H3013M-30/1	30	9.5	RED	H3001/100	100
H3016M-30/1		12.7	YELLOW	H3004/100	
H3019M-30/1		16	GREY	H3007/100	
H3022M-30/1		19	BLUE	H3010/100	

## UTILUX BAND STRAP TOOL

This tool tensions and secures the band strap in place when a buckle is applied. Manufactured from high tensile steel it features a machine threaded tensioning screw. One tool for all widths.



Cat No.	Description
#46-TOOL	BAND STRAP TENSIONING TOOL



# FIND YOUR PERFECT MATCH

## Metrel EurotestEASI, Compared

Metrel's EurotestEASI multifunction installation testers are fast, accurate, easy to use, and perform a complete set of installation safety tests according to AS/NZS 3000 & AS/NZS 3017. They enable real-time voltage monitoring, phase sequence testing and earth resistance measurement, and are equipped with integrated characteristics of fuses and RCDs for PASS/FAIL evaluation of test results.

Which instrument best suits your needs? Let's find out.



MI3100S



MI3100SE



MI3100BSE

### FEATURES

	MI3100S	MI3100SE	MI3100BSE
Insulation resistance with DC voltage from 50 V to 1000 V	✓	✓	✓
Continuity of PE conductors with 200 mA test current with polarity change	✓	✓	✓
Continuity of PE conductors with 7 mA test current without RCD tripping	✓	✓	✓
Line impedance with PSC	✓	✓	✓
Earth loop impedance	✓	✓	✓
Earth loop impedance test without tripping the RCD	✓	✓	✓
TRMS voltage and frequency	✓	✓	✓
3-phase rotation	✓	✓	✓
Earth resistance (3-wire method)	✓	✓	✓
Built-in help screens for referencing on site	✓	✓	✓
Built-in New Zealand fuse tables for automatic evaluation of the line / loop impedance result	✓	✓	✓
Automated RCD testing procedure	✓	✓	✓
Monitoring of all 3 voltages in real-time	✓	✓	✓
Automatic polarity reversal on continuity test	✓	✓	✓
Built-in charger and rechargeable batteries as standard accessory	✓	✓	✓
RCD testing (general and selective, type AC, A, F)	✓	✓	✓
BT communication with PC, Android tablets and smart phones via optional BT dongle		✓	✓
Built-in memory for 1800 test results and EuroLink Pro PC software for downloading of test results and report creation		✓	✓
EuroLink Android APP, data management tool (optional licence required)		✓	✓
RCD testing (B, B+, MI RCD, EV RCD, PRCD, PRCD-K, PRCD-S)			✓



### TransNet New Zealand Ltd

#### Auckland

78 Cryers Road  
East Tamaki  
Auckland  
NEW ZEALAND  
Ph 0800 442 182  
Fax 0800 442 183  
PO Box 39 383  
Howick, Auckland

#### Wellington

10 Petone Ave  
Petone  
Wellington  
NEW ZEALAND  
Ph 04 576 2530  
Fax 04 576 0040  
PO Box 39 383  
Howick, Auckland

#### NEW ZEALAND

sales@transnet.co.nz

### TransNet Tonga

#### Nuku'alofa

Lakalakaimonu Multi Utility  
Complex  
Taufa'ahau Road  
Poutaha  
Nuku'alofa  
TONGA  
Ph +67 627 939  
Fax +67 627 976  
PO Box 2932  
Nuku'alofa

#### TONGA

transnet@kalianet.to



Have you chosen the right tester for you?  
Contact us today.

TransNet NZ Ltd has made every reasonable effort to ensure the accuracy of this information and it is to the best of our knowledge correct and reliable. Under no circumstances does this constitute an assurance of any particular quality or performance and users should independently evaluate the suitability of products for their desired application. All information in this publication including pricing, drawings, illustrations, images and graphic designs are reflections of our current understanding. TransNet NZ Ltd reserves the right to make any adjustment to this information at any time. Our liability for the products outlined in this publication is set forth in our standard terms and conditions of trade. In case of any potential ambiguities or questions, please contact us for clarification.

